



EnergyNews

FOR YOUR HOME & FAMILY



Doing what's right for Florida and for America

It takes several sources of energy to bring you affordable, reliable and clean energy. There's natural gas, nuclear and solar. At FPL, we are proud of another special source of energy, and that's our people. For years, the hard-working men and women who make up Florida Power & Light Company have been committed to reducing our dependence on foreign oil, increasing our use of solar energy and U.S.-produced natural gas, and making investments in smart technology. All to keep bills among the lowest in the nation.

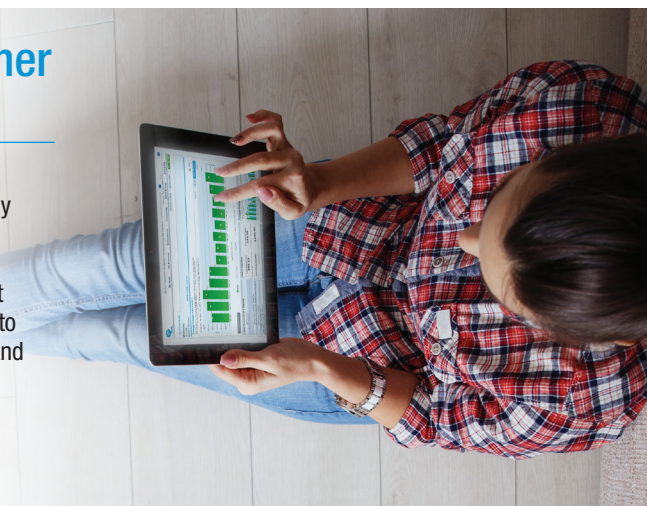
Why have we done all of this? Because it is the right thing to do – for you, for Florida and for America. Learn more: [» FPL.com/smartinvestments](http://FPL.com/smartinvestments)

Help keep your summer bills low

Save energy and money during the hot summer months. With FPL's Online Energy Dashboard, you can view your energy usage over time and see how changes in the temperature affect your bill. See what days and times you use the most energy to understand your energy usage patterns and find opportunities to help lower your bill.

Track your usage online:

[» FPL.com/EnergyDashboard](http://FPL.com/EnergyDashboard)



Technical hearing for proposed rate adjustment

A technical hearing will be conducted next month before the Florida Public Service Commission (PSC) regarding our petition for a base rate increase in Docket No. 160021-EI. This hearing will allow FPL and other parties to the proceeding the opportunity to present sworn, expert testimony and exhibits relative to our request. The hearing will be governed by the provisions of Chapter 120 of the Florida Statutes and Chapters 25-22 and 28-106 of the Florida Administrative Code.

To learn more about our rate request, visit: [» FPL.com/answers](http://FPL.com/answers)

Customer comments regarding FPL's quality of service or proposed rate adjustment may be submitted to the following address: Commission Clerk, Office of Commission Clerk, Florida Public Service Commission, 2540 Shumard Oak Blvd., Tallahassee, FL 32399-0850. Such comments should refer to Docket No. 160021-EI.

Technical Hearing

Aug. 22 – 26, Aug. 29 – 31, and Sept. 1 – 2, 2016
9:30 a.m.

Florida Public Service Commission
Betty Easley Conference Center, Room 148
4075 Esplanade Way
Tallahassee, FL 32399

After consideration of the evidence in the record and a review by its staff, the PSC will determine the appropriate revenue requirements for FPL at the following Special Agenda Conference.

Special Agenda – Revenue Requirements

Oct. 27, 2016, 9:30 a.m.
Florida Public Service Commission
Betty Easley Conference Center, Room 148
4075 Esplanade Way
Tallahassee, FL 32399

The PSC will hold a second Special Agenda Conference to set rates for all rate classes that reflect the approved revenue requirements.

Special Agenda – Rates

Nov. 29, 2016, 9:30 a.m.
Florida Public Service Commission
Betty Easley Conference Center, Room 148
4075 Esplanade Way
Tallahassee, FL 32399

Those requiring special accommodations at the hearing or special agendas because of a physical impairment should call the Office of Commission Clerk at 850-413-6770 at least 48 hours prior to the hearing. Any person who is hearing- or speech-impaired should contact the PSC by using the Florida Relay Service, available at 800-955-8771 (TDD) or 711.

If the hearing must be cancelled due to the settlement of the case, named storm or other disaster, the PSC will attempt to give timely notice to the parties. Notice of cancellation of the hearing will also be provided on the PSC's website, www.psc.state.fl.us, under Hot Topics found on the home page. Cancellation can also be confirmed by calling the Office of the General Counsel at 850-413-6199.



Learn about electric and magnetic fields

Electric and magnetic fields (EMF) are created wherever electricity flows, which includes the wiring in our homes and schools, power lines, and the electrical equipment and devices we use at work and home. Leading U.S. and international scientific organizations, such as the National Cancer Institute and the World Health Organization, have evaluated EMF research. These organizations generally conclude that while some studies report a weak possible association with childhood leukemia, the body of scientific research does not show that EMF causes or contributes to any type of cancer or any other disease or illness.

Learn more: [» FPL.com/EMF](http://FPL.com/EMF)

Connect with us



Facebook.com/FPLconnect
Twitter.com/insideFPL

FPLblog.com
YouTube.com/FPL